

A modern, multi-story interior featuring a glass-enclosed elevator shaft. The space includes a dining table with white chairs, a kitchen area with orange accents, and a mezzanine level with a glass railing and bookshelves. The floor is made of large, light-colored tiles. The overall aesthetic is clean and contemporary.

enta villa

Elegant travel  
at home



# ABOUT TK ELEVATOR

**We are elevator people. Striving to move the world. Known for a passion for technology with service at the heart at our business.**

Over the past decades, TK Elevator has established itself as one of the world's leading elevator companies and became independent after its sale by thyssenkrupp AG in August 2020. To our customers in over 100 countries we provide an extensive service network that guarantees close proximity, with over 1,000 locations and more than 50,000 employees.

TK Elevator's most important business line is our manufacturer-independent service for mobility solutions represented by over 25,000 service technicians.

Our new installation product portfolio ranges from commodity elevators for residential and commercial buildings to cutting-edge, highly customised solutions for state-of-the-art skyscrapers. What's more, it also consists of escalators and moving walks, passenger boarding bridges, stair and platform lifts. Integrated cloud-based service solutions, such as the MAX platform, are gaining in importance. These digital offerings mean there are no longer any limits to urban mobility.



**>50,000**  
employees



**~1,000**  
sales- and  
service  
locations



Customers in  
**>100**  
countries



Sales of  
**>€8 billion**





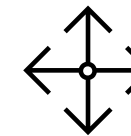
## enta villa Elegant travel at home

Compact and space saving, enta villa is a home elevator perfect for multi-floor houses and villas. It includes a wide range of premium features found in commercial building applications and combines precision German engineering with clever space utilization, efficiency, comfort and style.



### Designed for ideal home

German precision engineering combines comfort and safety.



### Versatile technology maximizes space

Compact and efficient for more room and harmonious living.



### Provides a stylish experience

Sleek, modern car designs match with the latest interior trends.

### DESIGNED FOR

- multi-floor houses and villas

### SPECIFICATIONS

- Max. travel height: ≤18m
- Max. number of floors: ≤6
- Rated load: 320-400kg
- Rated speed: 0.4m/s
- Power supply: Single phase, AC 220V





### Strict design criteria

Designed, tested and manufactured to TK Elevator's stringent standards. These are higher than those for typical residential applications - for family safety with style.

### Family safety foremost

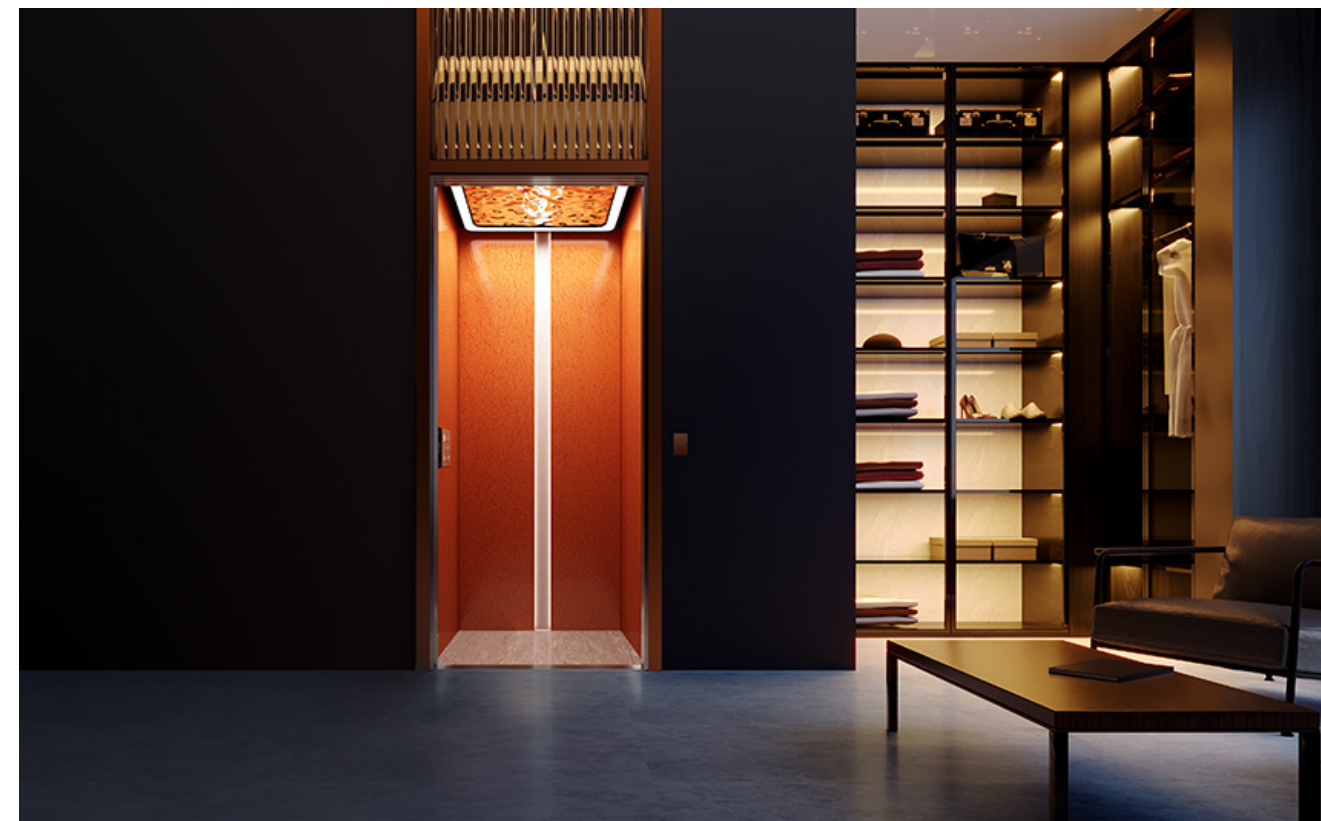
ARD (Automatic Rescue Device) activates if there's a power cut in your home and sends the elevator to the nearest floor to release passengers straight away, totally stress free.

## Designed for ideal home

Market-leading innovations and German precision engineering add value to your home. Every enta villa combines comfort and safety with luxurious living.

### Simple sophistication

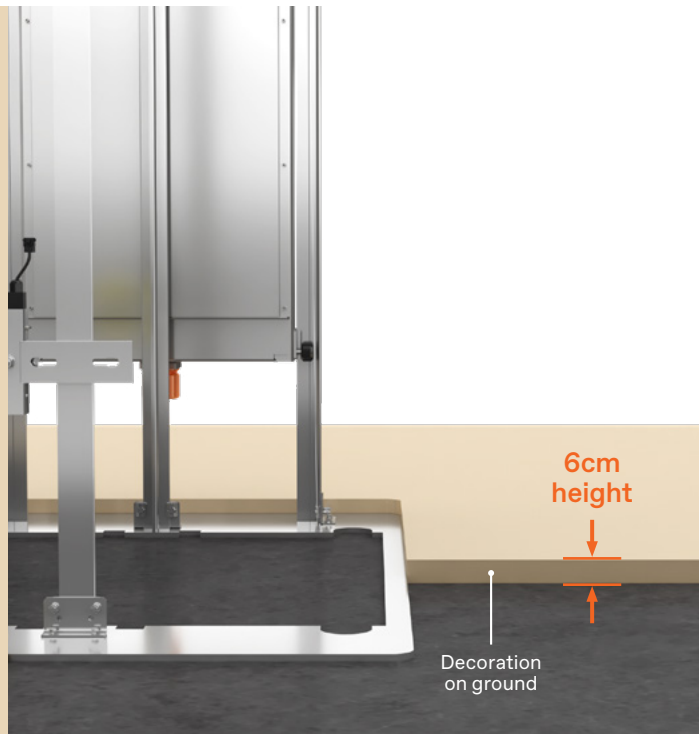
enta villa is made to fit seamlessly into your home. It takes up less space by not needing an extra room for elevator machinery and it even runs on your normal domestic single phase electricity supply, using about as much power as a washing machine. So no complex wiring is needed - and it saves energy too.





## Versatile technology maximizes space

By using many advanced features common to our commercial passenger elevators, enta villa will move you around your home with quiet efficiency.



### Low-pit design

The pit requirement of just 6cm ensures that the elevator entrance will be level with your home's floor finishes.

This also means little or no digging and faster, simple installation.

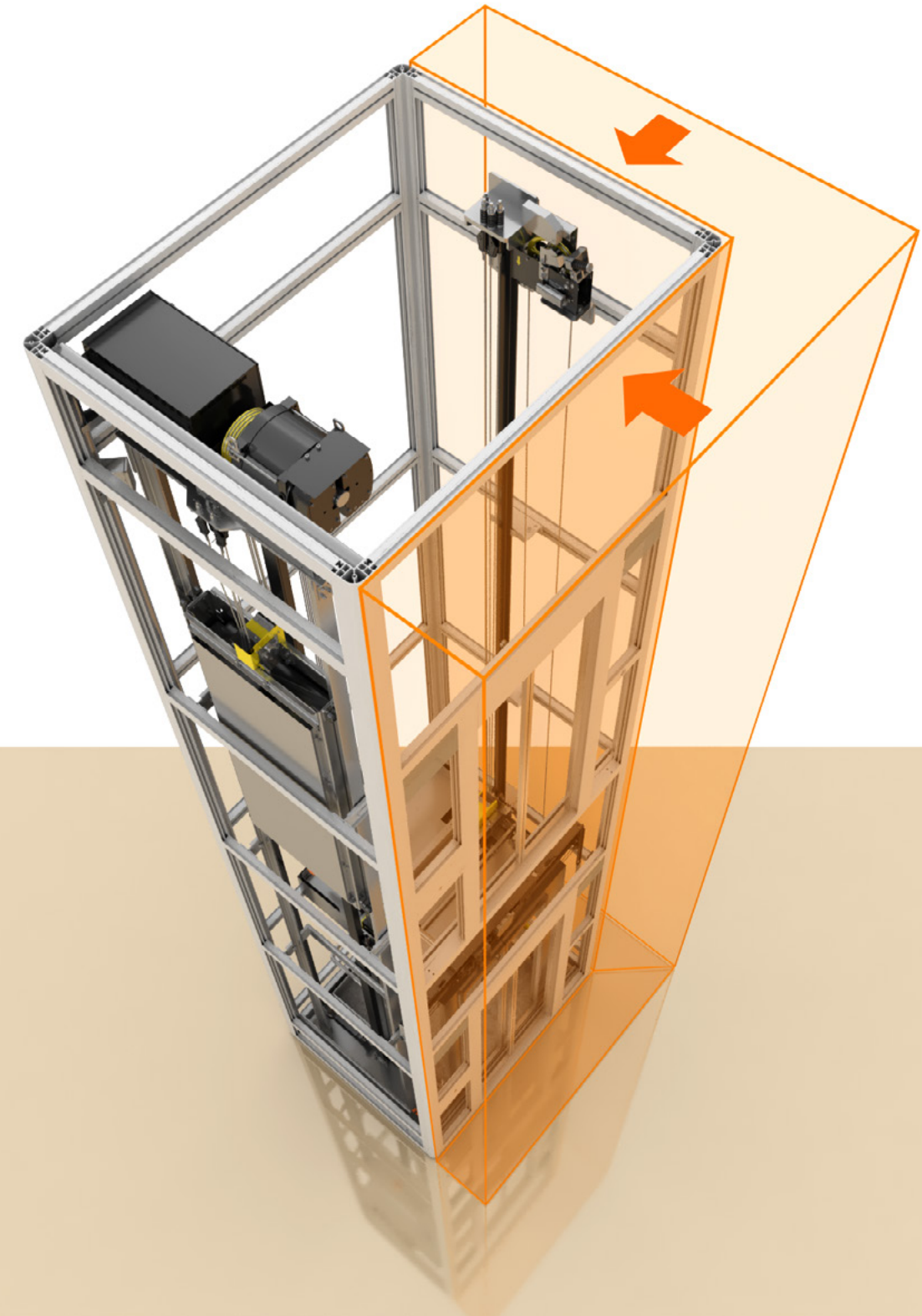
### Durable and comfortable

Just like our commercial elevators, enta villa uses counterweights and cars with solid guide rails and roller guide shoes to ensure smooth and quiet travel. Their oil free operation avoids the grease and dirt traps of traditional lubrication to keep your home clean and tidy.



### Small shaft, more space

Efficient space utilization in the shaft releases more household space.



## Provides a stylish experience

A range of trend-based cabin interiors and fixtures to match every home style.



### Designs to match your home

Complement your home's interior design with enta villa's range of seven stylish cabins, each one designed to emphasize your commitment to style. We offer a range of quality finishes for a premium look. Plus a wide range of fixtures to complete your elevator in harmony with your home.

### Harmonious lighting

Soft lighting creates a relaxed and pleasant atmosphere, while maintaining a comfortable color temperature below 4000K - ideal for the cozy, soft and ambient glow that suits home applications best.

## PANORAMA

Perfectly complements the quality of your home, adding style and a superior visual experience.



### PANO S-1

Ceiling  
PL01

Rear wall  
Glass

Side wall  
Hairline finish stainless steel + Glass

Front wall  
Hairline finish stainless steel

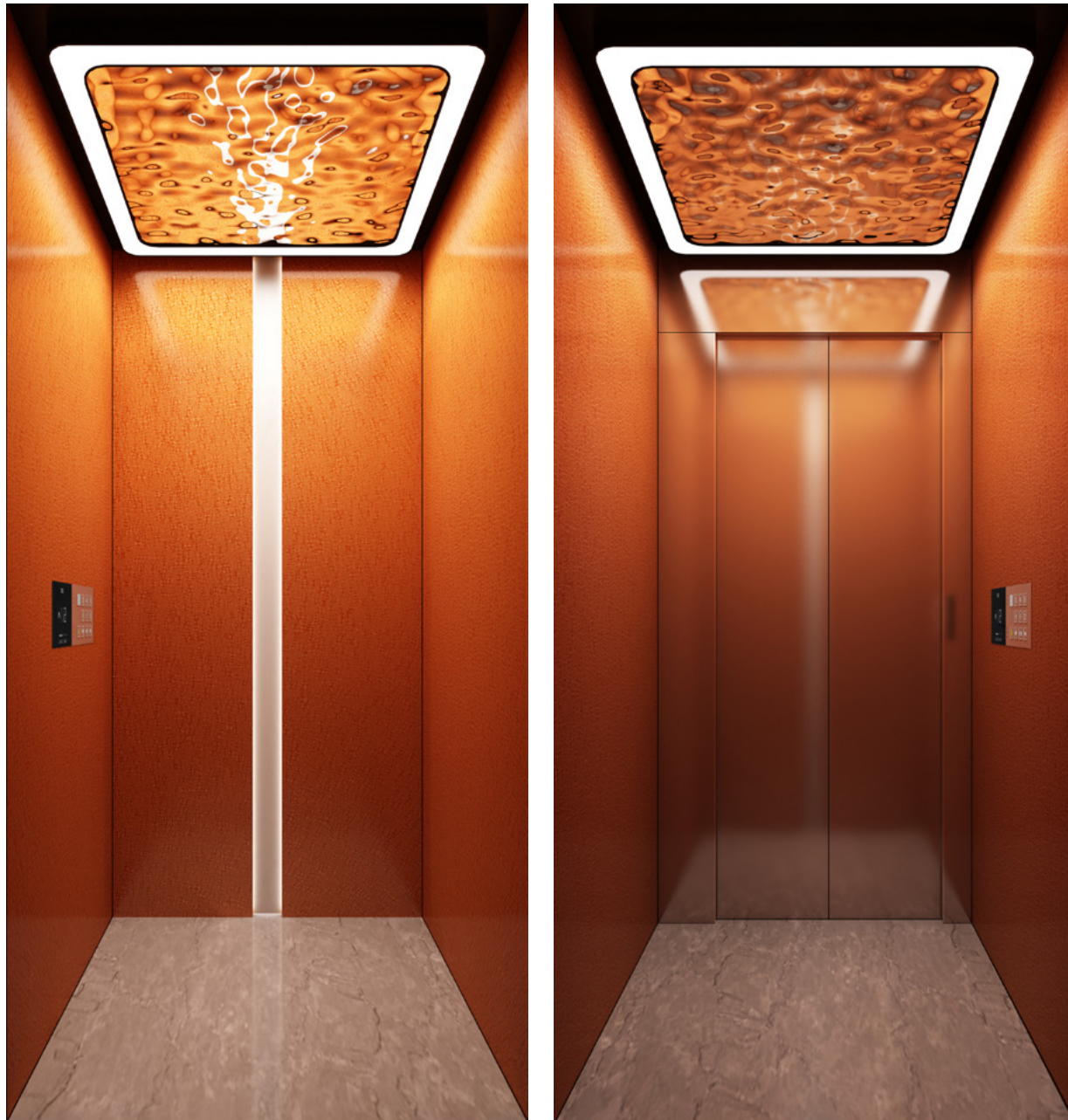
Car door / Landing door  
Hairline finish stainless steel

Floor  
PVC CFL010



# STYLISH

Stylish interior design with a touch of luxury.



## ST-1V

Ceiling  
S1-C5

Rear wall  
Powder coating RAL2008 with white primer ice orange pattern  
+ Powder coating RAL9003

Side wall  
Powder coating RAL2008 with white primer ice orange pattern

Front wall  
Hairline finish stainless steel with bronze coating

Car door / Landing door  
Hairline finish stainless steel with bronze coating

Floor  
Piano concerto



## OL-2V

Ceiling  
S2-C2

Rear wall  
Mirror finish stainless steel with titanium gold coating P036

Side wall  
Mirror finish stainless steel with titanium gold coating P036  
+ Film on metal - white marble pattern FS01

Front wall  
Vibratory finish stainless steel with titanium gold coating

Car door / Landing door  
Vibratory finish stainless steel with titanium gold coating

Floor  
Baroque



# HERITAGE REFINED

Revival of colors, crafts and materials from the past with today's conveniences.



## HR-2V

**Ceiling**  
S4-C1

**Rear wall**  
UV printing - Landscape painting UV-P02

**Side wall**  
Mirror finish stainless steel +  
Film on metal - ebony pattern FW01

**Front wall**  
Mirror finish stainless steel

**Car door / Landing door**  
Mirror finish stainless steel

**Floor**  
Chinese porch window



## HR-31V

**Ceiling**  
PL01

**Rear wall**  
Film on metal - ebony pattern FW01 and oak pattern FW08

**Side wall**  
Sandblast finish stainless steel with champagne gold coating + Film on metal - ebony pattern FW01

**Front wall**  
Sandblast finish stainless steel with champagne gold coating

**Car door / Landing door**  
Sandblast finish stainless steel with champagne gold coating

**Floor**  
Acrobatic etude + Storm



# CONTEMPORARY

Minimalistic interior design,  
influenced by local taste.



## CT-1V

Ceiling  
S3-C1

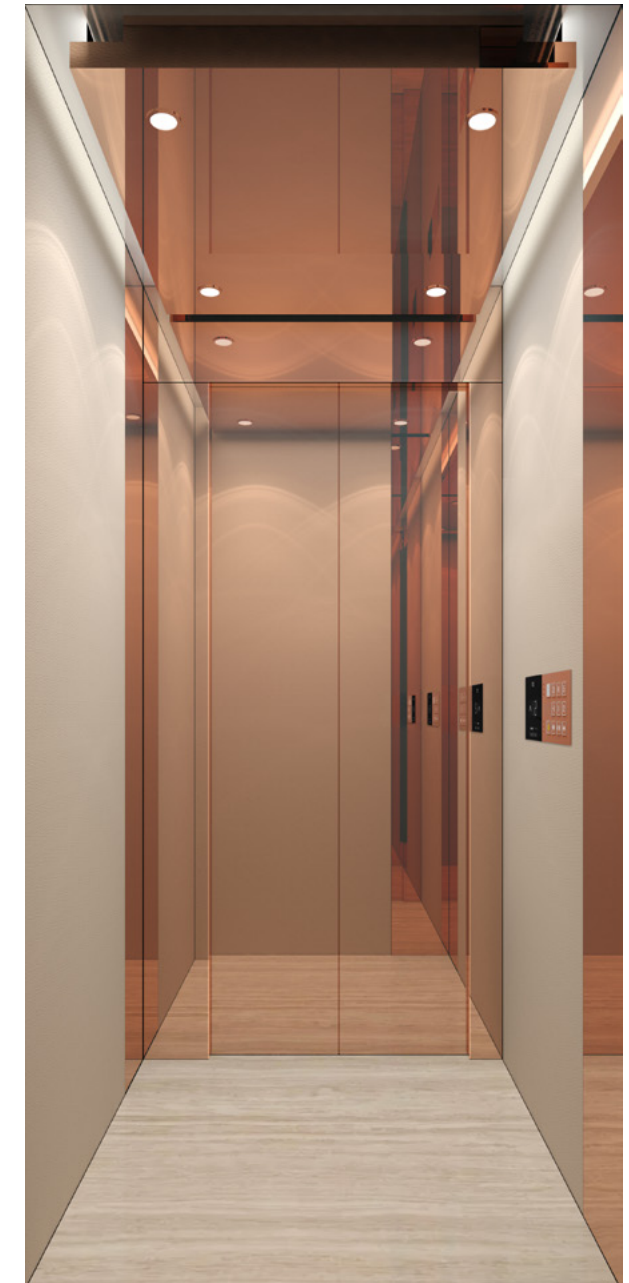
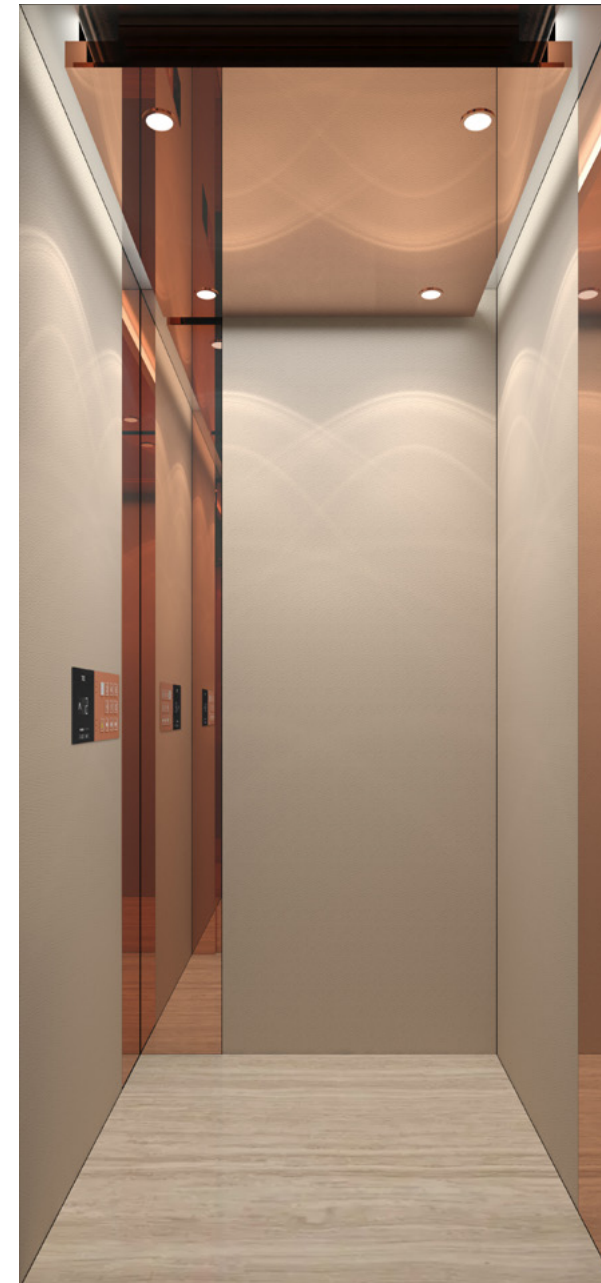
Rear wall  
Mirror finish stainless steel with black titanium coating +  
Sandblast finish stainless steel

Side wall  
Mirror finish stainless steel with black titanium coating +  
Film on metal - oak pattern FW08

Front wall  
Sandblast finish stainless steel with black titanium coating

Car door / Landing door  
Sandblast finish stainless steel with black titanium coating

Floor  
Symphonic poem prelude



## CT-2V

Ceiling  
S1-C7

Rear wall  
Mirror finish stainless steel with bronze coating +  
Film on metal - Leather grain lichee FL03

Side wall  
Mirror finish stainless steel with bronze coating +  
Film on metal - Leather grain lichee FL03

Front wall  
Mirror finish stainless steel with bronze coating

Car door / Landing door  
Mirror finish stainless steel with bronze coating

Floor  
Oserova



# FIXTURES

Choose from premium fixtures to highlight the style and colors of your home.

## COP

|                     |   |
|---------------------|---|
| Model               | CV4D-A32M   |
| Display             | White LED   |
| Faceplate           | 1. Hairline finish stainless steel  |
| Faceplate (options) | 2. Hairline finish stainless steel gold titanium coating<br>3. Hairline finish stainless steel champagne gold coating<br>4. Hairline finish stainless steel bronze coating<br>5. Hairline finish stainless steel black titanium coating |

|                               |  |   |
|-------------------------------|--|---|
| Button (braille is available) |   | MT42<br>Square button, white light          |
|                               |  | AN180 (option)<br>Round button, white light |



## COP

|                     |   |
|---------------------|---|
| Model               | CV4E-A32M   |
| Display             | White LED   |
| Faceplate           | 1. Hairline finish stainless steel  |
| Faceplate (options) | 2. Hairline finish stainless steel gold titanium coating<br>3. Hairline finish stainless steel champagne gold coating<br>4. Hairline finish stainless steel bronze coating<br>5. Hairline finish stainless steel black titanium coating |

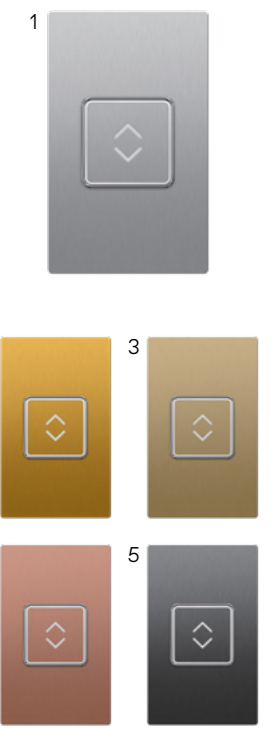
|                               |   |   |
|-------------------------------|---|---|
| Button (braille is available) |  | MT42<br>Square button, white light          |
|                               |  | AN180 (option)<br>Round button, white light |



## LOP

|                     |   |
|---------------------|---|
| Model               | LB5D-A3   |
| Display             | White LED   |
| Faceplate           | 1. Hairline finish stainless steel  |
| Faceplate (options) | 2. Hairline finish stainless steel gold titanium coating<br>3. Hairline finish stainless steel champagne gold coating<br>4. Hairline finish stainless steel bronze coating<br>5. Hairline finish stainless steel black titanium coating |

|                               |  |   |
|-------------------------------|--|---|
| Button (braille is available) |   | MT42<br>Square button, white light          |
|                               |  | AN180 (option)<br>Round button, white light |



## Handrail

Matching handrails bring convenience for pregnant, infirm, young and older residents.

**TSF01**  
Round handrail -  
Hairline finish stainless steel



**TRH01**  
Round handrail -  
Transparent acrylic and hairline finish stainless steel



**TFH01**  
Flat handrail -  
Transparent acrylic







[www.tkelevator.com](http://www.tkelevator.com)



## FUNCTION LIST (MACHINEROOM-LESS)

| CATEGORY                       | NO. | FUNCTION   | STANDARD / OPTION |
|--------------------------------|-----|--|-------------------|
| Enhanced Car Functions         | 1   | Opening door at the current landing  | S                 |
|                                | 2   | Collective selective control   | S                 |
|                                | 3   | Full-load non-stop   | S                 |
|                                | 4   | Onward travel to the next stop in the case of a non-opening door                                     | S                 |
|                                | 5   | Anti-nuisance "limit number of car call when empty load"   | S                 |
|                                | 6   | Adjustable waiting time for opening door   | S                 |
|                                | 7   | Energy saving operation for car light and fan  | S                 |
|                                | 8   | Elevator start-up loading weighting compensation function  | S                 |
|                                | 9   | Changing main landing  | O                 |
|                                | 10  | Main landing return  | O                 |
|                                | 11  | Ajustable time for main landing return   | O                 |
|                                | 12  | Leveling accuracy adjustment   | S                 |
|                                | 13  | Absolute positioning   | O                 |
| Safety and Emergency Functions | 14  | Landing to the nearest floor in case of problem (eg. overtemperature of motor, car position missing) | S                 |
|                                | 15  | Emergency car lighting   | S                 |
|                                | 16  | Overload protect   | S                 |
|                                | 17  | Repeat door closing in the event of lock failure   | S                 |
|                                | 18  | Door overload protect (with car door)  | S                 |
|                                | 19  | Safety curtain for door  | S                 |
|                                | 20  | Parking (Stop using the elevator)  | O                 |
|                                | 21  | Emergency electrical operation   | S                 |
|                                | 22  | Inspection operation   | S                 |
|                                | 23  | Traction machine over temperature supervision  | S                 |
|                                | 24  | Traction machine skidding protection   | S                 |
|                                | 25  | Door operator temperature protection (with car door)   | S                 |
|                                | 26  | Restrict the opening of the car door inside the car (with car door)                                  | S                 |
|                                | 27  | Brake torque detection function  | S                 |
|                                | 28  | Door lock safety device failure detection  | O                 |
|                                | 29  | Emergency operation for electrical brake release   | S                 |
|                                | 30  | Automatic rescue operation   | S                 |
|                                | 31  | Earthquake function (sensors by customer)  | O                 |
|                                | 32  | Protection against terminal runby  | S                 |
|                                | 33  | Protection against safety circuit fault  | S                 |
|                                | 34  | Overspeed protection   | S                 |
|                                | 35  | Low speed protection   | S                 |
|                                | 36  | Remote test of overspeed governor  | S                 |
|                                | 37  | Electromagnetic braking function   | S                 |
|                                | 38  | Automatic fault rescue   | S                 |
|                                | 39  | Protection against door-opening outside door zone  | S                 |
|                                | 40  | Pit maintenance operation function input (without maintenance box)                                   | S                 |
|                                | 41  | Pit maintenance operation function input (with maintenance box)                                      | O                 |
| Trip Functions                 | 42  | Operation counter (trip and hour)  | S                 |

S - Standard; O - Option; NA - Not applicable

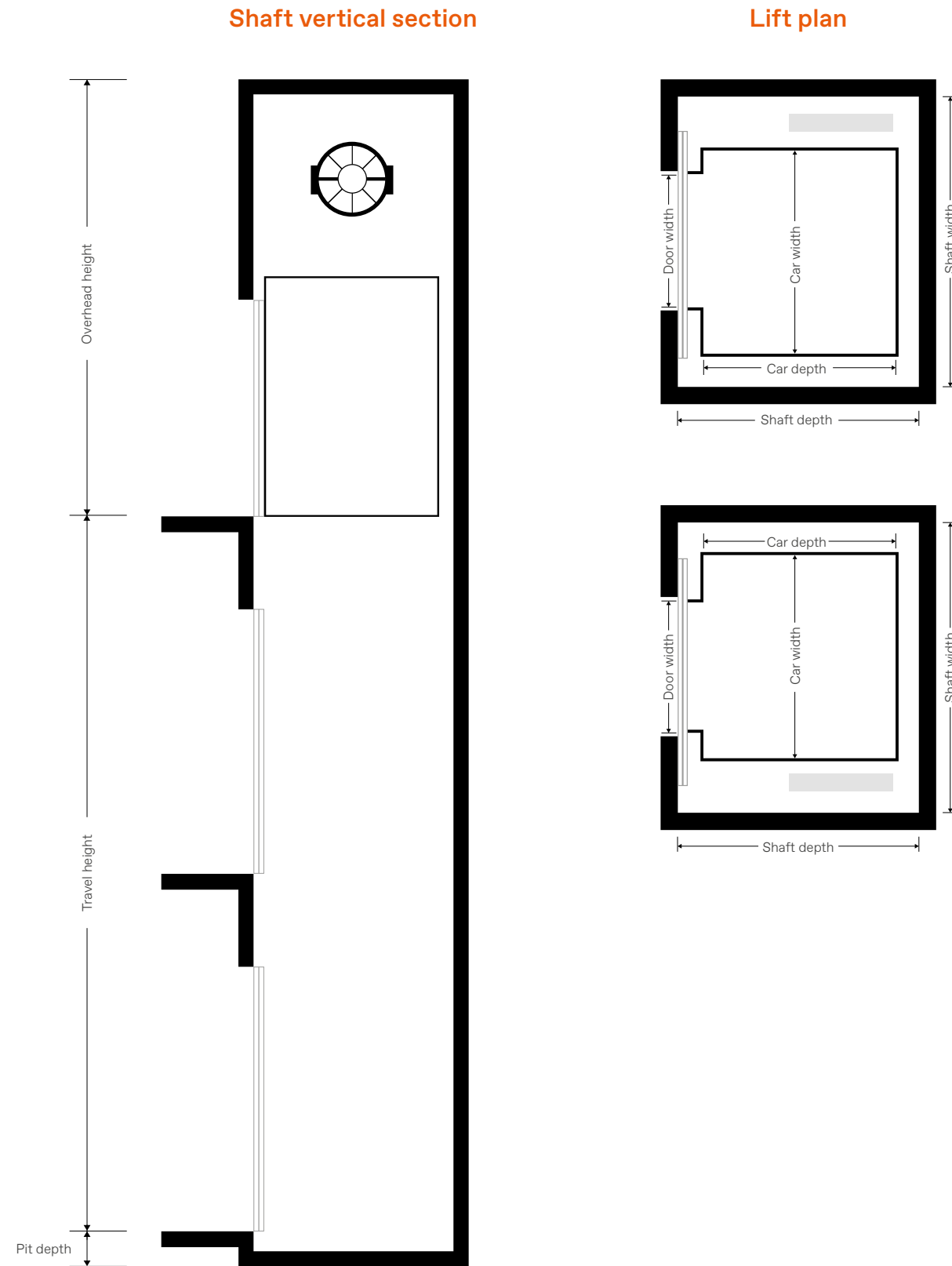
## FUNCTION LIST (MACHINEROOM-LESS)

| CATEGORY                | NO.                         | FUNCTION   | STANDARD / OPTION |
|-------------------------|-----------------------------|--|-------------------|
| Human Machine Interface | 43                          | Door close button                                    | S                 |
|                         | 44                          | Door open button                                     | S                 |
|                         | 45                          | Car call cancellation (by double press)              | S                 |
|                         | 46                          | Car indicator of LED (white)                         | S                 |
|                         | 47                          | Setting of landing display character                 | O                 |
|                         | 48                          | Client APP (standard Ver.)                           | NA                |
|                         | 49                          | COP for disabled persons (only braille push buttons) | O                 |
|                         | 50                          | LOP for disabled persons (only braille push buttons) | O                 |
|                         | 51                          | Door hold button                                     | O                 |
|                         | 52                          | Call button jammed detection                         | O                 |
|                         | Monitoring and Tele-service | 53   | Emergency call    |

S - Standard; O - Option; NA - Not applicable



enta villa  
LAYOUT (MACHINEROOM-LESS)



enta villa  
TECHNICAL SPECIFICATIONS (MACHINEROOM-LESS)



BASIC PARAMETER

| RATED LOAD (KG) | RATED SPEED (M/S) | MAX. TRAVEL HEIGHT (M) | MAX. NUMBER OF FLOORS | MIN. PIT DEPTH (MM) |
|-----------------|-------------------|------------------------|-----------------------|---------------------|
| 320             | 0.4               | 18                     | 6                     | 60                  |
| 400             | 0.4               | 18                     | 6                     | 60                  |

CAR / SHAFT SIZE

| RATED LOAD (KG) | CAR SIZE (CW X CD) (MM) | DOOR OPENING   | DOOR WIDTH (MM) | SHAFT SIZE (SW X SD) (MM) |
|-----------------|-------------------------|----------------|-----------------|---------------------------|
| 320             | 900 × 1100              | Centre opening | 700             | 1580 × 1400               |
|                 |                         | Centre opening |                 | 1680 × 1400               |
|                 |                         | Side opening   |                 | 1450 × 1480               |
| 400             | 1100 × 1100             | Centre opening | 800             | 1750 × 1400               |
|                 |                         | Centre opening |                 | 1780 × 1400               |
|                 |                         | Side opening   |                 | 1650 × 1480               |
|                 | 950 × 1100              | Side opening   | 700 / 800       | 1500 × 1500               |

Minimum shaft size is measured based on the concrete shaft. If the shaft material is different or technical specification is out of standard scope, please contact TK Elevator representative.

OVERHEAD SIZE

| STANDARD OVERHEAD HEIGHT (MM) | CAR HEIGHT (MM) | DOOR HEIGHT (MM) |
|-------------------------------|-----------------|------------------|
| 2750                          | 2100            | 2000             |
| 2850                          | 2200            | 2100             |
| 2950                          | 2300            | 2100             |
| 3050                          | 2400            | 2100             |